

SINGLES LADDER!

RUNS MON. SEPT. 1ST - SUN. NOV 9TH



Goal:
Play at least 5 matches
in 10 weeks,
in a flex manner.
(Play 8 & win big
- read below)



Men's
Ladder

Women's
Ladder

COST

- **\$45 for 10-week Ladder**
- Covers YOUR PORTION of court fees at Gates for THREE (3) matches:
 - Keep playing matches throughout the 10 weeks; Pay GTC's regular, affordable court fees as you go.

LEVELS & DETAILS

Men: 2.5, 3.0, 3.5, 4.0, 4.5, 5.0+

Women: 2.5, 3.0, 3.5, 4.0, 4.5, 5.0+

"WE WILL KICK YOU OUT!"

This is a Level-Controlled Ladder.

- We will be gentle! We won't really kick you out, but we will move you (with grace and dignity intact) into the proper level! Players must compete at their official published NTRP level.
- If you don't have an official NTRP level, we will help you get placed into the correct Ladder division! Keep reading for details.
- Historically, the old GTC ladder was "out of level". We admit it! Now we use win-loss %, game differentials, verification clinics, and other methods. **We are committed to a level-controlled tennis ladder, so everyone can have the most fun.**
- The Ladder Director may move you to the proper level in the middle of the ladder season. Be prepared!

SIGN UP NOW!

Scan here to
Join the
Ladder
>>>>>>>>



*Although our online option will always be the quickest method, feel free to call the Front Desk at 303.355.4461 as an alternative way to register.

SHORT HISTORY: THE GATES LADDER

- Since 1975, GTC historically had one of the most popular tennis ladders in the western United States, with sometimes up to 500 people per year participating.
- In 2020, GTC temporarily stopped the ladder when COVID hit.
- Fall 2025: GTC welcomes back The Ladder during our 50th anniversary.

WHAT IS THE GTC SINGLES LADDER?

- **The Singles Ladder is a 10-week open-to-the-public program for those who seek singles play.**
 - 80-90% of the matches are typically scheduled at your convenience by challenging others (or being challenged).
 - 10-20% of the matches will take place at optional GTC Sponsored "Quick Events" (for extra fee), for those who prefer. (see back of flyer more details)
 - Challenges can go both ways
- **Access:** Tap in to GTC's big database of players and meet some cool new people at your level.
- Regular-season matches are **not USTA-sanctioned**, so it takes the pressure off.
 - Benefit: Great environment to practice your new forehand!
- The **optional Ladder Tournament** at the end-of-season (still not sanctioned, but prizes and bragging rights at stake) gives a chance to add some pressure back on!
- **Spirit of the Ladder:** Always friendly-competitive and community-first; mirroring that of Gates Tennis Center.
- **Gates uses two proven formats**, depending on participation: Your division's format will be:
 - 8-16 participants: Pod Format, "Throw Out Your Losses"
 - 17+ participants: Traditional Ladder, "Bump & Swap" (see back for more details)

JOIN THE "ELITE 8 CLUB"

8 Match Prize: Become part of the **"Elite 8 Club"**: 8 Matches played **at Gates** (regardless of win/loss record) in the 10-week Ladder qualifies you for the Elite 8 Club and the following prize:

- YOU PICK your choice of one (1) Gates activity:
 - * **Social Mixer** (2-hour activity, reg. \$12) -or-
 - * **Ball Machine** (1-hour activity, reg. \$16) -or-
 - * **Friday One And Done Drill** (1.5-hour activity, reg. \$37.25)
- PLUS...
- * **\$10 Discount** off next season's Tennis Singles Ladder

*See back of flyer for more details.

PLAYOFFS?

Qualification is simple! Just play **5 matches within the 10 weeks!**

*See back of flyer for more details.

SIGN UP ONLINE AT...
GATESTENNISCENTER.INFO

frontdesk@gatetenniscenter.info
303.355.4461



I DON'T HAVE A RATING? WHAT SHOULD I DO?

THREE CONVENIENT OPTIONS OFFERED:

A. Come to our Gates Rating Clinic:

Come either **Sat Aug 30 or Sun Aug 31** to come get assessed for FREE! (reg. \$15) Run by GTC pros, the Ratings Clinic will be **1 hour** (45 minutes of drills, ball machine, hitting; and 15 minutes of an off-court review). Try some demos, talk to the pros, be social, and most importantly, you will now have a GTC stamp of approval / rating for YOUR proper level for the Ladder!

B. (or) Take a Private Lesson w/ these great pros!*



Pat Kim
\$65/hr



George Ferguson
\$70/hr



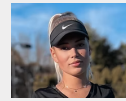
John Page
\$75/hr



Chris Foglia
\$75/hr



Jess Jones
\$85/hr



Rebeka Martancikova
\$70/hr



Cole Cates
\$70/hr



Aaron Gambrell
\$65/hr



Caitlin Fluegge
\$75/hr



Miles Dempsey
\$65/hr

MORE Info on our Rating Clinics Option:

- **Sat, Aug. 30th or Sun, Aug. 31st (3:15pm - 6:15pm)**
- **Registered Ladder Players: FREE; Open to the Public: \$15**
- **Slots available each day:**
 - **3:15-4:15pm** (45 mins. On-Court / 15 min. Review)
 - **4:00-5:00pm** (45 mins. On-Court / 15 min. Review)
 - **4:45-5:45pm** (45 mins. On-Court / 15 min. Review)
 - **5:30-6:30pm** (45 mins. On-Court / 15 min. Review)
- **14 players max per slot. Sign up early!**



**and more pros available. Call GTC or Email chris@gatestenniscenter.info*

C. (or) None of the above. Self-Rate and take a gamble!

Take the highest risk, The Ladder Director will monitor your results closely.

THERE ARE 2 PRIMARY WAYS TO PLAY YOUR MATCHES IN THE LADDER:

1) CHALLENGE MATCHES

80-90% of ladder matches are challenge matches where you or your challenger are booking the court at Gates Tennis Center, and it can become competitive for those courts.

2) QUICK EVENTS

10%-20% of matches can be played in "Quick Events". The customer is invited to play in a 3-hr event at Gates where GTC organizes everything; and you will play three (3) matches in the three-hour event window.

QUICK EVENT DATES - \$18

- #1 Friday, Sept 5th, 4-7pm ***Special Kick-Off Quick Event**
- #2 Saturday, Sept 6th, ALL DAY ***Special Kick-Off Quick Event**
- #3 Sunday, Sept 7th, ALL DAY ***Special Kick-Off Quick Event**
- #4 Sat/Sun, Sept 20th-21st, ALL DAY (Details TBD)
- #5 Sat/Sun, Sept 27th-28th, ALL DAY (Details TBD)
- #6 Sat/Sun, Oct 4th-5th, ALL DAY (Details TBD)
- #7 Sat/Sun, Oct 11th-12th, ALL DAY (Details TBD)

**More Quick Events will be offered. Stay alert! We text, we call, and post on socials!*

TIPS ON BOOKING COURTS AT GTC



Easiest Times To Book Matches at Gates:

- Monday - Friday: 6:45am til 5:30pm
- Saturday - Sunday: 1:45pm til 9pm/close



Hardest Times To Book Matches at Gates:

- Monday - Friday: 5:30pm til 10pm
- Saturday - Sunday: 6:45am til 1:45pm

GATES IS NOW A DIGITAL LADDER! DOWNLOAD THE TENNISRUNGS APP:

To view rankings, message opponents, report scores, and stay updated on ladder activity. This app is your go-to-tool for scheduling matches, adding your scores, and tracking your progress throughout the season.

Download
Tennis
Rungs App
for Android
>>>>>>>>



Download
Tennis
Rungs App
for Apple
IOS >>>>>>



- The app is integral to participation, but is not related to the sign up process. Please see QR code on front page to join.
- Having trouble scheduling on your own? Give us a call and we'll make sure you keep playing! See back for more rules and info.*

FALL LADDER TOURNAMENT



- How to qualify: Must complete at least 5 ladder matches.
- **Fri Nov. 14th - Sun Nov 16th:** Separate tournaments for each division.
 - Matches start no earlier than Fri Nov 14th at 4pm.
- Format and prizes will be announced before the tournament.
- Seeding will be based on season-end rankings
- Tournament Entry fee is \$25, which covers courts/balls.



SIGN UP ONLINE AT...
GATESTENNISCENTER.INFO

frontdesk@gatestenniscenter.info
303.355.4461



LADDER RULES & GUIDELINES

Monday, September 1st - Sunday, November 9th, 2025

1. ENTRY FEE: \$45 - Includes YOUR PORTION of court fees for THREE (3) matches at Gates Tennis Center. (reg. \$24; excludes Quick Events)

- Free Court Time is for matches played at GTC of 1.5 hrs or 2 hours; your choice.
- Keep playing additional matches beyond your three (3), and pay Gates regular, affordable court fees of \$8/hr split amongst the players.
- Book courts through GTC's website and online system. Online: GTC has an "up to 5-day" in advance reservation ability. Call front desk 303-355-4461 with any questions. Ladder coordinator is Chris Foglia: chris@gatestenniscenter.info
- **The value of the matches in the Ladder Program are not transferable to your general GTC account, and expire at the conclusion of each Ladder season.**

2. WHAT DIVISION SHOULD I SIGN UP FOR?

- Players Having a current NTRP: Players must compete at their official published NTRP level.
- Players Not Having a current NTRP: Players have three (3) choices:
 - 1.) Attend GTC rating clinic on Sat. Aug 30 or Sun. Aug 31 (\$15 public / FREE ladder registrants) for a GTC recommendation for approved Ladder Level.
 - 2.) Take a private lesson, at any time, with a GTC pro; get a GTC recommendation for approved Ladder Level. See flyer for more details.
 - 3.) Join the Ladder as a "Self-Rated Gambler" and self-rate into a Ladder Division.
 - take the highest risk of the Ladder Director moving you out. Your results versus verified players will be monitored.

3. FORMAT A: When 8 to 16 participants in your DIVISION = POD FORMAT "THROW OUT BAD RESULTS!"

- Nobody in your pod is initially ranked higher than anybody else. Anybody can "challenge" anybody!
- You can play the same person a maximum of twice, if you desire.
- Minimum 5 matches to qualify for playoffs
- Your best 5 results count toward playoffs.
 - **"Throw out" all the results you don't like!**
- 1 pt earned for winning a set
- 2 pts earned for winning a match
- Bonus Point (3rd Pt) earned if opponent is a "Quality Opponent"
 - Quality Opponent = an opponent who finishes the league with a .500 winning % or better.
- EXAMPLE: **YOUR RECORD THIS SEASON WAS 5 WINS and 3 LOSSES.**
 - "throw out" your 3 losses.
 - your best 5 results are your 5 wins. (10 pts)
 - two of your 5 wins were against "quality opponents" (determined at the conclusion of the season) earning 2 bonus pts (+2 pts)
 - you earned 12 pts total!

4. FORMAT B: When 17+ participants in your DIVISION = TRADITIONAL LADDER "SWAP then BUMP"

- First 4 weeks: (Mon.Sept 1 - Sun.Sept 28) "SWAP"
 - Open Challenge: Play anyone in your division. Positions are exchanged when the lower ranked player wins.
 - Example: If #27 (Jim) beats #3 (Sam), former #27 Jim becomes #3, and former #3 Sam **"swaps"** to #27.
- Next 4 weeks: (Mon.Sept 29- Sun. Oct 26) "BUMP"
 - 20 spot challenge, play anyone within 20 spots. Bump format. Challenger moves up, and opponent moves down one spot when the lower-ranked player wins.
 - Example: If #27 (Jim) beats #3 (Sam), Jim becomes #3, and Sam **"bumps"** to #4. All other players between #3 and #27 also slide one slot down.
- Final 2 weeks: (Mon. Oct 27- Sun. Nov 9) "BUMP"
 - 10 spot challenge, challenges are limited to players within 10 spots of your ranking. Bump format. Challenger moves up, and opponent moves down one spot when the lower-ranked player wins.
 - Example: #27 (Jim) can no longer challenge #3 (Sam). Maximum of 10 spot challenge.
 - Example: #27 (Jim) can challenge #18 (Bob), and if #27 Jim wins, Jim becomes #18; while Bob will "bump" to #19.
- Friday November 14th to Sunday November 16th: TOURNAMENT
 - At Ladder conclusion, a tournament is held for each division. Anyone who has played at least 5 matches qualifies to play in the tournament. The tournament is an additional fee. Tournament seedings are determined by the regular season results.

LADDER RULES & GUIDELINES

Monday, September 1st - Sunday, November 9th, 2025

5. HOW CAN I PLAY UP A DIVISION? To “play up” (playing ½ level higher than your published NTRP level), you must either 1.) become a “Regular Season All-Star” which is defined as undefeated with a minimum of 6 matches played at Gates; or 2) win the end of season Ladder Tournament.

6a. HOW MIGHT I GET BUMPED DOWN A DIVISION? To get “bumped down” a division, the Ladder Director will be looking for uneven matches. The Director will use analytics such as win-loss %, and game differential. Any player under 25% match win-loss rate, and/or 35% game differential versus verified opponents becomes a potential for getting relegated. Players who are “Self-rated Gamblers” (players who did not get GTC verification) will be audited with priority. Ladder Director has the final decision on all ladder levels. The integrity of the Ladder is always prioritized. No money back when downgraded. **Reminder of GTC Ladder Spirit:** thank you in advance for switching levels if deemed appropriate by GTC staff. Your cooperation helps keep all the matches more fun, equitable, and competitive for all involved. You may have enjoyed playing a ½ level up against better players, but they may not have enjoyed it equally! :)

6b. ELIGIBILITY FOR NEXT LADDER: The integrity of the levels of the Ladder will be an ongoing concern. In addition to moving participants up and down during the Ladder season, the Ladder Director will also reserve the right to determine eligibility for certain participants, based on their results, for upcoming Ladder seasons. Our goal at GTC is always to help the customer have a great experience, while balancing fairness of the program and integrity of the overall community. In addition to determining eligibility, GTC will also be offering opportunities for individuals to improve their tennis, such as lessons, ball machines and clinics. Please inquire.

7. RANDOM DRAW: Initial position on the ladder will be determined by a random draw. Players added after the application due will start at the bottom of the ladder.

8. RECOMMENDED SCORING: Best 2 out of 3 sets. 7-point tiebreak at 6–6 in each set. If players split sets (1-1) players play a 10-point tiebreaker. USTA rules apply to all matches. Other scoring formats are allowed if both parties agree before the match starts.

9. BALLS: Both parties bring a new can of balls for the match. Winner keeps the unopened can.

10. ETIQUETTE WHEN CHALLENGED: A challenged player should offer two reasonable days and times for the match within a 14-day period. No shows, inabilities to play and/or cancelled matches may be considered defaults.

11. SPIRIT OF THE LADDER: The spirit of the ladder is to accept as many challenges as you can within reason, play lots of different opponents; to have fun and meet people in the community.

12. RESERVATIONS: Matches can be 1.5 or 2 hrs in length. Incomplete matches cannot be counted. While a 2-hr reservation is more desirable, with competitive court reservations at Gates Tennis Center, sometimes a 1.5-hour reservation can work well too. Players have reported success with abbreviated scoring formats with a shorter reservation (ie: no-ad, etc) as long as both players agree in advance.

13. SCORE REPORTING: Winner must enter scores into the TennisRungs App immediately after the match. Any disputes (scoring, rules, or otherwise) must be brought to the Ladder Coordinator.

14. UPDATES: Rankings, scores, and match results are updated instantly through the **TennisRungs** app. Download the app to view the ladder, report scores, and message other players.

15. TOURNAMENT QUALIFICATION AND DETAILS: Anyone who has played at least 5 matches qualifies to play in the tournament. If there is less than an 8 person draw, management reserves the right to lower the 5 match standard. Seedings will be based on season ending rankings. There is a \$25 tournament entry fee which covers fees for courts and balls.

16. REGISTRATION DETAILS: Sorry, the Ladder is Non-refundable. Payment upon registration.

17. LADDER COORDINATOR: The ladder Coordinator has the final word on any complaints or disputes. Please contact Gates Front Desk (303-355-4461) for immediate assistance, or email Chris Foglia at chris@gatestenniscenter.info

18. AGE REQUIREMENT: Ladder participants must be at least 15 years of age or older to join.

19. MATCH CANCELLATIONS: If a Ladder participant cancels a scheduled match (when courts have been booked), within 24 hours or less of the match time, the canceling party must pay all applicable court fees and will report an official “loss” to the opponent.

SIGN UP ONLINE AT...
GATESTENNISCENTER.INFO

frontdesk@gatestenniscenter.info
303.355.4461

